

Results for *Warren County* from **The Everybody Survey**



You said it. We listened. A total of 1417 Warren County residents responded to *The Everybody Survey* in summer 2007. Here's what you said about the health status of our local population, about your own health, and about our community assets and challenges.

I. Warren County - Assets and Challenges

Question 5. Think about your home county for a minute. If you think about services provided by local government agencies, businesses, and organizations, which are most successful? Which are least successful?

Most Successful Services	Services Needing Improvement
<p>#1 Parks and recreation</p> <p>#2 Good Schools</p> <p>#3 Garbage disposal and recycling</p> <p>#4 Safe water supply</p> <p>#5 Low crime / safe neighborhoods</p>	<p>#1 Roads and traffic flow</p> <p>#2 Affordable childcare & activities for teens</p> <p>#3 Affordable housing</p> <p>#4 Health care & other Services</p> <p>#5 Child abuse and neglect</p>

Question 7. Here are some ways that a community can support the physical and mental health of its residents.

Which are most successful in your home county?

Which need the most improvement?

Community Supports That Need Improvement	Most Successful Community Supports for Physical & Mental Health
<p>#1 Jobs with health insurance</p> <p>#2 Healthy behaviors and lifestyles</p> <p>#3 Tolerance for Diversity</p> <p>#4 Feeling safe in your neighborhood</p>	<p>#1 Religious or spiritual values Opportunities for community involvement or volunteer work</p> <p>#2 Feeling safe in your neighborhood</p> <p>#3 Family support for each other</p>

II. Health Issues Within Warren County

Question 10. Which of these are the most serious health problems in your home county?

Most serious equals those problems that have the greatest impact on overall community health.

Most Serious Health Problems		% Who Chose It
#1	Overweight / Obesity	84%
#2	Alcohol & drug addiction	68%
#3	Heart attack, stroke, high blood pressure	56%
#4	Cancer	54%
#5	Diabetes	40%

We Should Improve These Problem Health Behaviors		% Who Chose It
#1	Alcohol or drug abuse	54%
#2	Not enough physical activity	53%
#3	Tobacco use	51%
#4	Poor diet	48%

Question 11. These health behaviors are related to some common health problems. Those health problems can lead to early death, disability, family suffering, cost for care, and the overall economy. Which should we work to improve in your home county?

Question 12. Here are some factors related to injury. Which are the most serious safety problems for people in your home county?

Most Serious Injury Risk Behaviors		% Who Chose It
#1	Drunk and drugged driving	70%
#2	Unsafe driving (speed, distractions)	70%
#3	Unsafe roads (traffic, hills, curves)	47%
#4	Drug related violence	45%
#5	Not enough sidewalks	39%

I Worry About These Environmental Health Risks		% Who Chose It
#1	Molds	63%
#2	Diseases from mosquitoes and ticks	60%
#3	Food poisoning illness (at home, in restaurants, from ready-to-eat groceries)	51%
#4	Radon	49%
#5	Air pollution from motor vehicles	42%

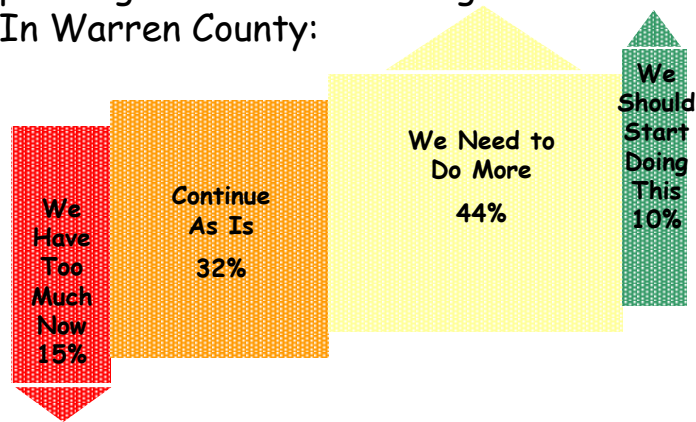
Question 13. Do any of these environmental health issues concern or worry you?

Question 14. Which of these environmental health behaviors should we work to improve in your home county?

We Should Improve These Environmental Behaviors		% Who Chose It
#1	Second-hand smoke	68%
#2	Unsafe food handling practices	67%
#3	Illegal dumping of garbage	63%
#4	Industries polluting the water	52%
#5	Industries polluting the air	51%

Question 15. Community Planning and Land-use Zoning.

What about community planning and land-use zoning? In Warren County:



III. Physical Activity Facilities in Warren County

Question 33. Does your home county have enough of these physical activity opportunities available?

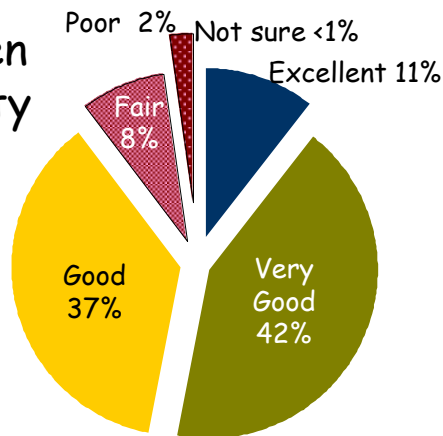
We Need These Physical Activity Opportunities...		% Who Said It
#1	Sidewalks	74%
#2	Bicycle paths	70%
#3	Walking or hiking trails	62%
#4	Community swimming pools	56%
#5	Dancing	44%
#6	Horseback riding facilities	42%
#7	Places for yoga, tai-chi, etc.	36%
#8	Health/fitness clubs	28%

IV. Your Personal Health Status - Warren County

Question 17.
Would you say that in general your health is:

- Excellent
- Very Good
- Good
- Fair
- Poor

Only one in ten Warren County respondents described themselves as being in 'fair or 'poor' health.



Fair or Poor

U.S. average = 15%

Kentucky = 23%

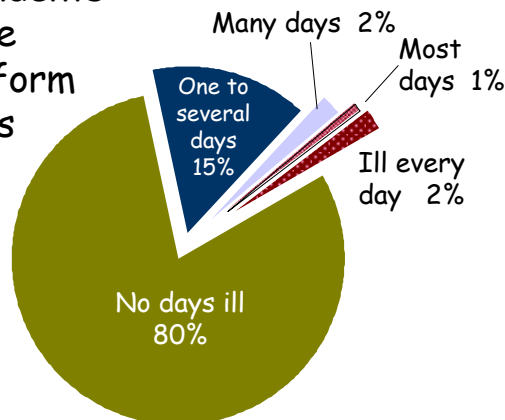
BRFSS survey, 2006

I've Been Told That I Have...		% Who Said It
#1	Overweight / Obesity	31%
#2	High blood pressure	24%
#3	Arthritis	18%
#4	Risk factors for stroke or heart attack	12%
#5	Hearing/Vision loss	12%
#6	Lung Disease/asthma	9%
#7	Diabetes	8%
<i>None of These (a total of 11 diseases listed)</i>		<i>37%</i>

Question 18. Have you ever been told by a doctor, nurse, or other health professional that you had any of the following chronic illnesses?

Question 19. How many days in the past month were you not able to work or do your daily activities because of illness?

One in six Warren County respondents said they were unable to perform daily activities at least one day in the past month due to illness.

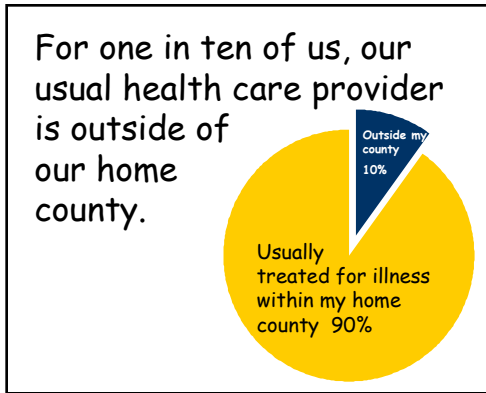


V. Health Care Services in Our Communities

Question 20. When you are sick, where do you usually go for treatment?

Question 32. When your children are sick, where do you usually take them?

My Family's Usual Health Care Providers		
	Me	My children
#1	A doctor's office	#1
#2	Urgent care center	#2
#3	Hospital emergency room	#3
#4	I never go to the doctor	
#5	Community health center	#4
#6	No usual place	#5
#7	Free clinic	#6



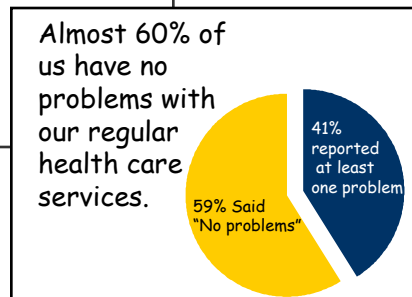
Question 21. Is your usual health care provider outside of your home county?

Question 22. I go outside my home county for health care because...

Why I go outside my home county for health care services		#	Comments
#1	My doctor of choice is outside my county	5	Needed Specialist elsewhere
#2	Other (see list)	7	Concerned about quality
#3	Hospital of choice is outside my county	5	Use MD where I work
#4	Takes too long to get an appointment with local doctors	1	It is cheaper elsewhere
#4	doctors	2	Family MD elsewhere
#5	I need someone who is open later in the day or evening	1	Can't be seen quickly enough
#5	evening		

Question 23. Are any of these a problem with your regular health care services?

Problems with my regular health care services	
#1	I cannot get an appointment quickly enough
#2	I cannot afford the medicines
#3	I cannot afford the doctor's fees
#4	I cannot come when they are open
#5	They do not explain things well enough



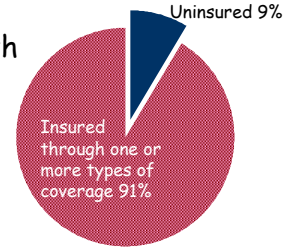
VI. Health Insurance Coverage

Question 24:
Do you have health insurance?

I have health insurance through...

- 78%** My employer
- 6% I buy my own
- 5% Medicare
- 3% Other (see list)
- 3% Medicaid

9 percent of us do not have health insurance.



My health insurance covers these types of care

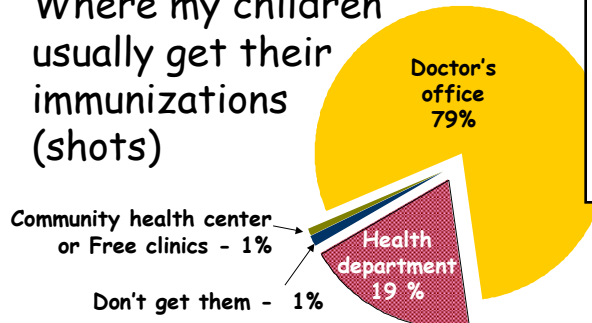
- 98%** Doctor's office treatment
- 97% Hospital care
- 92% Prescription medicines
- 83% Preventive care (annual physical, cancer screenings, blood sugar, cholesterol, etc.)
- 68% Immunizations (baby shots, flu shots, adult shots, etc.)
- 65% Mental health services
- 57% Rehab services (physical, occupational, or speech therapy, etc.)
- 47% Chiropractic services
- 37% Drug/alcohol treatment

Question 25: If you have health insurance, what type of care does it cover?

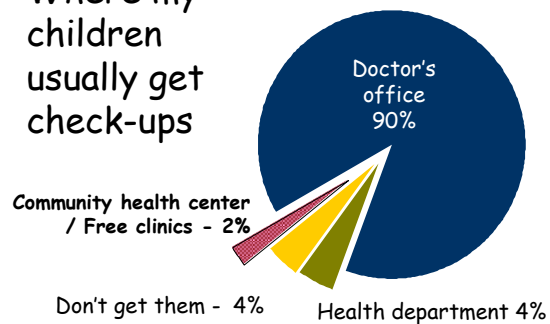
VII. Children's Preventive Services

Question 33. Where do your children usually get check-ups?

Where my children usually get their immunizations (shots)



Where my children usually get check-ups



Question 34. Where do your children usually get their immunizations?

VIII. Going Elsewhere for Health Care Services

Question 27: Within the past year, did you have any of these services outside your home county?

In the past year, I had these services outside my county		% Who Said It
#1	None of these outside my home county	78%
#2	Lab work	13%
#3	Radiology (X-ray, ultrasound, mammography, MRI, etc.)	9%
#4	General surgery	5%
#5	Other services	4%
#6	Hospital stay	3%
#7	Emergency room services	3%
#8	Counseling services	2%

Question 28. Within the past year, did you see any of these medical specialties outside your home county?

In the past year, I saw these medical specialties outside my home county		% Who Said It
#1	None of these outside my home county	75%
#2	Other (See list)	21%
#3	Dental care	15%
#4	Gynecology (female care)	12%
#5	Eye care	8%
#6	Dermatology	7%
#7	Orthopedic/Bone care	6%
#8	Dental specialist	6%
#9	Allergist (allergies)	5%
#10	Ear, nose, and throat care Cardiac/Heart care	4%
#11	Ear, nose, and throat care	4%
	Pregnancy & birth, Urology care, Foot care, Psychiatry care, Rehabilitation (in-patient), Rehabilitation (out-patient), Hearing services	less than 1%

Question 37. Does your home county have enough of these health services available?

Warren County <i>needs more</i> of these health services.		
More than one half of respondents said this.	60% 54% 51%	'Sick child' day care School health education School nurses
One third to one half of respondents said this.	49% 46% 46% 43% 41% 35% 35% 35%	After-hours sick care Weight loss programs or services Adult day care Nursing home beds Respite care for home-bound caregivers Health Department clinic services Group education or support groups Home health care
One quarter to one-third of respondents said this.	33% 32% 28% 27% 26%	Hospital beds Urgent treatment clinics Prenatal care Personal education on using my medications correctly Outpatient rehabilitation
Less than one quarter said this.	21% 14% 13% 8%	Ambulance services / paramedics X-ray & Ultrasound Medical equipment services Chiropractic care

IX. Mental Health Services

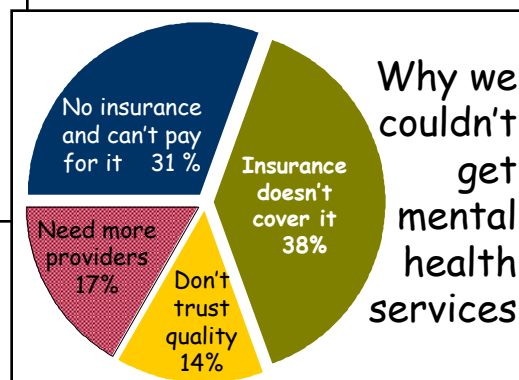
My Household Has Been Unable to Get Needed Mental Health Services within the past year

None needed	91%
Needed services, and <u>were able</u> to get them	5%
Counseling / therapy	4%
Crisis care	1%
Other services	1%

Some quotes

- [A] stigma...Subject...is never mentioned.
- [There are] too few options for treatment.
- Need more emphasis on mental health care
- Alcohol seems to be the main medicine for mental health care.

Question 35. Within the past year, did you or anyone in your household need any of these mental health services, but were unable to get them?



Question 36. If you could not get needed mental health services, please describe/explain.