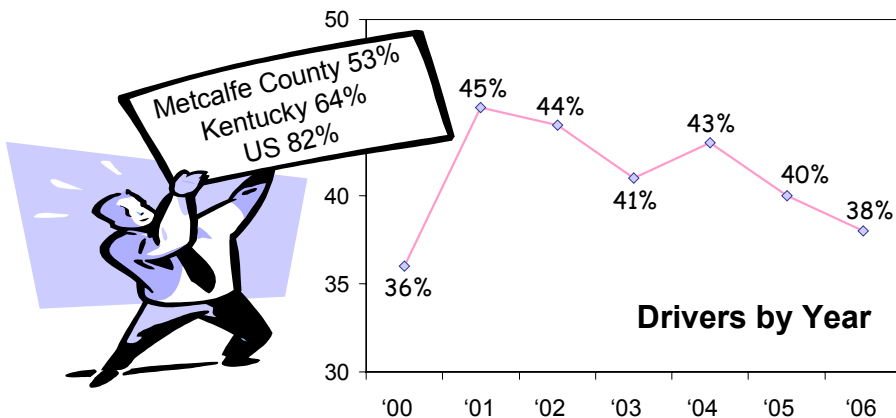
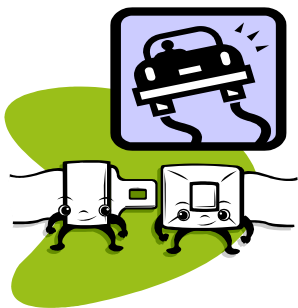


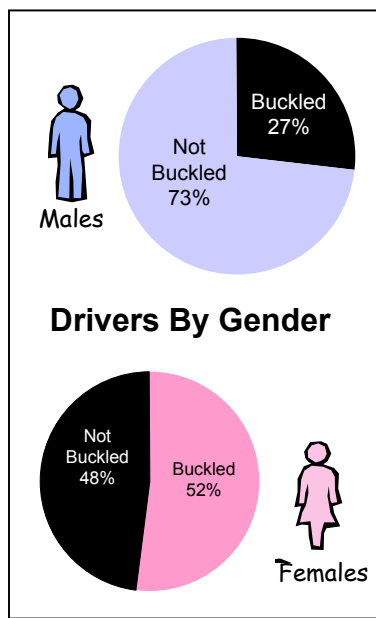
# Seat Belt Usage, 2006

## Metcalfe County, KY

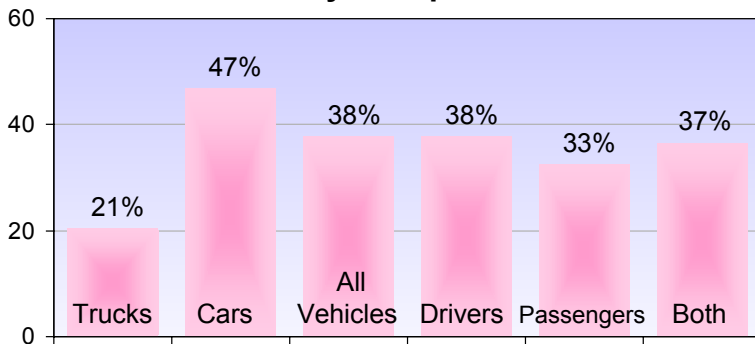
Observational surveillance was conducted on 1,643 vehicles at 6 sites in Metcalfe County during the spring and summer of 2006.



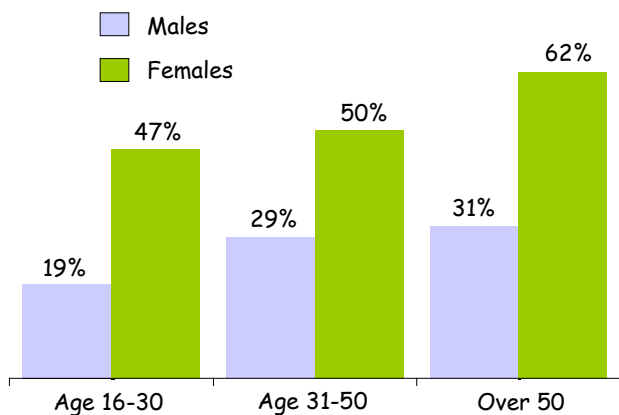
For the most part, seat belt usage has been steadily decreasing since 2001.



### Seat Belt Users by Group

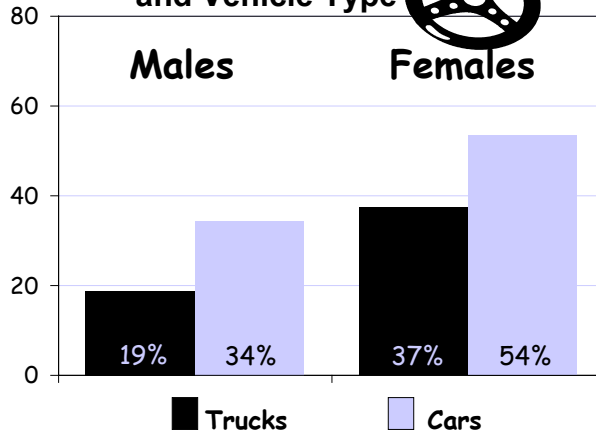


**Females** buckled up more often than **Males**.



The age group least likely to wear seat belts are the 16-30 year olds.

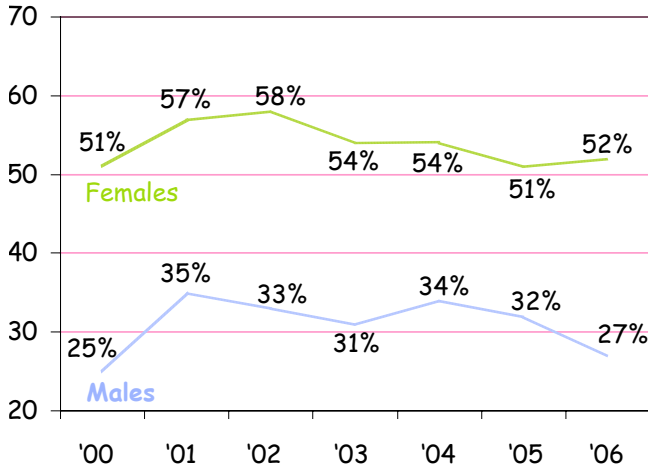
### Drivers by Gender and Vehicle Type



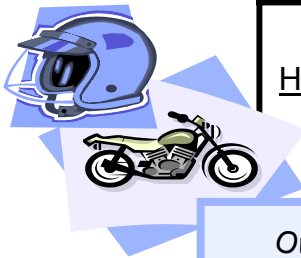
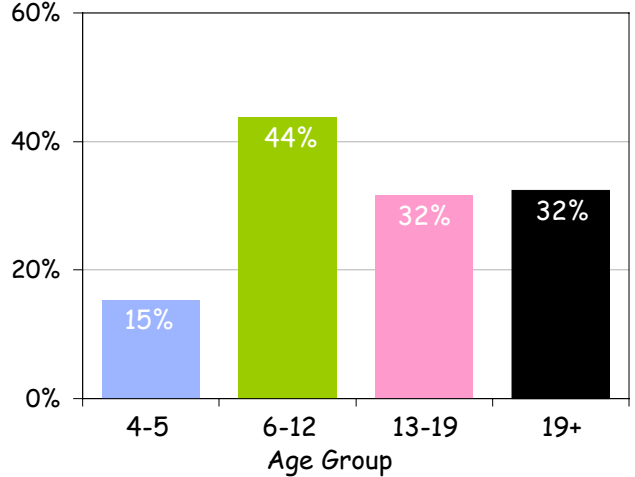
Both males and females buckled up less when driving trucks than cars.



**Males have always had a much lower rates of seat belt use.**



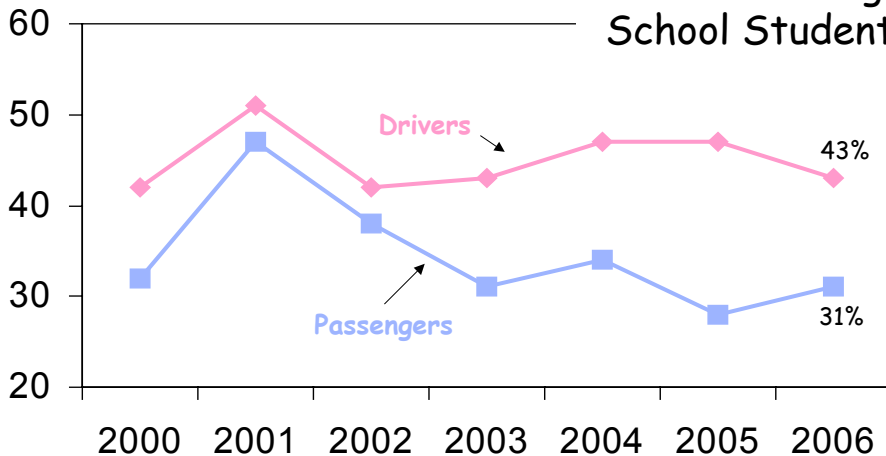
**Passenger usage by age group**



	<u>Helmets</u>	<u>Not Helmets</u>
	30%	70%

Only about 1 in 3 of all motorcyclists wore helmets.

**Middle and High School Students**



This represents seat belt use over the past 7 years at the entrance of 68/80 and 861 for both drivers and passengers. Usage dropped slightly this year for drivers but increased for passengers.