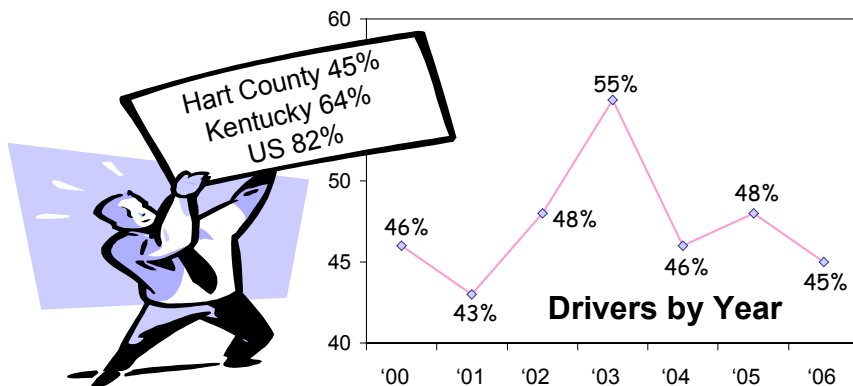
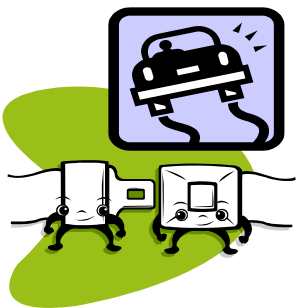


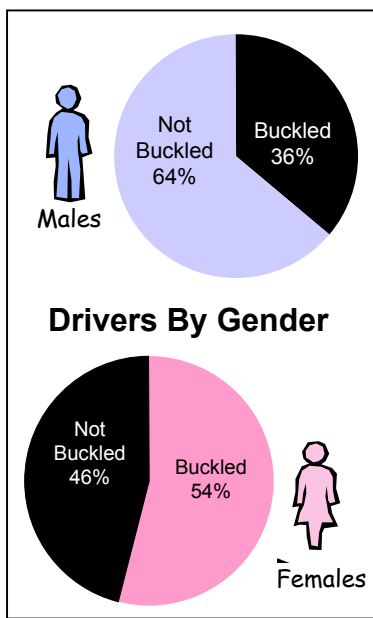
Seat Belt Usage, 2006

Hart County, KY

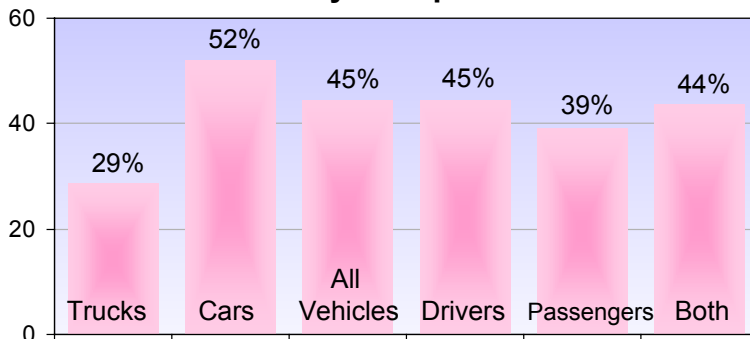
Observational surveillance was conducted on 1,997 vehicles at 8 sites in Hart County during the spring and summer of 2006.



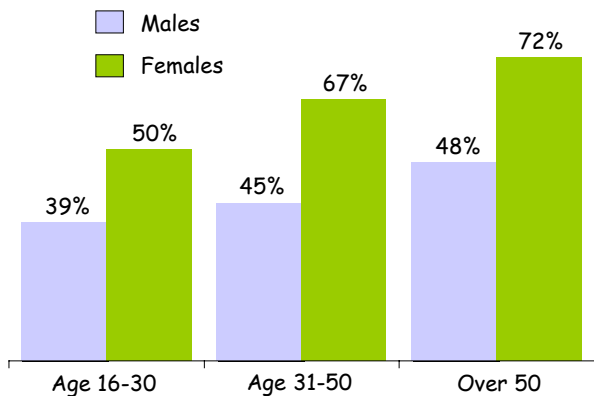
After a slight increase last year, seat belt use has again started to fall.



Seat Belt Users by Group

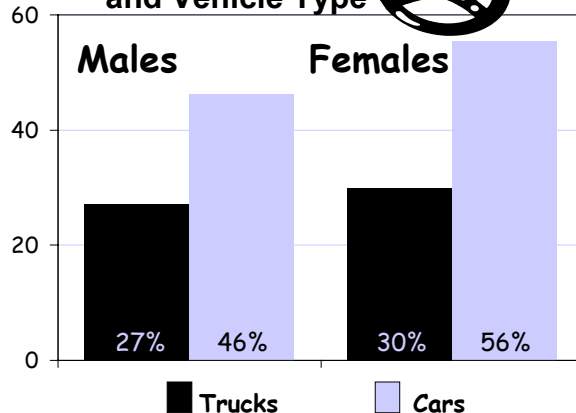


Females buckled up more often than **Males**.



The age group least likely to wear seat belts are the 16-30 year olds.

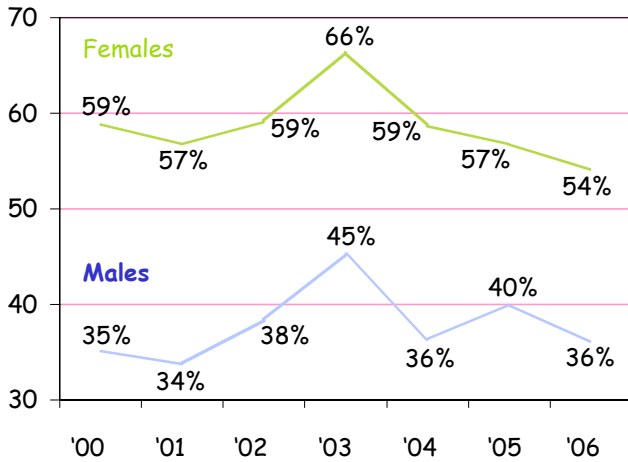
Drivers by Gender and Vehicle Type



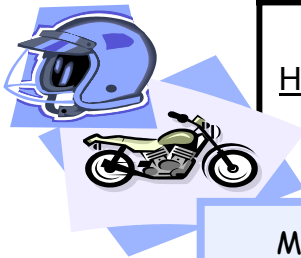
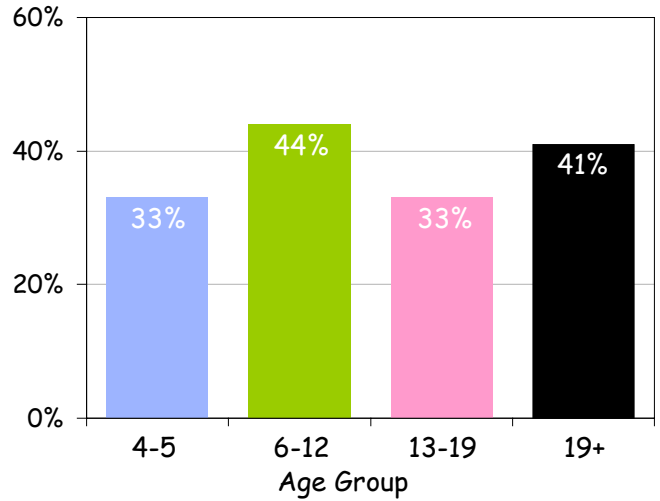
Both males and females buckled up less when driving trucks than cars.



Males have always had a much lower rates of seat belt use.



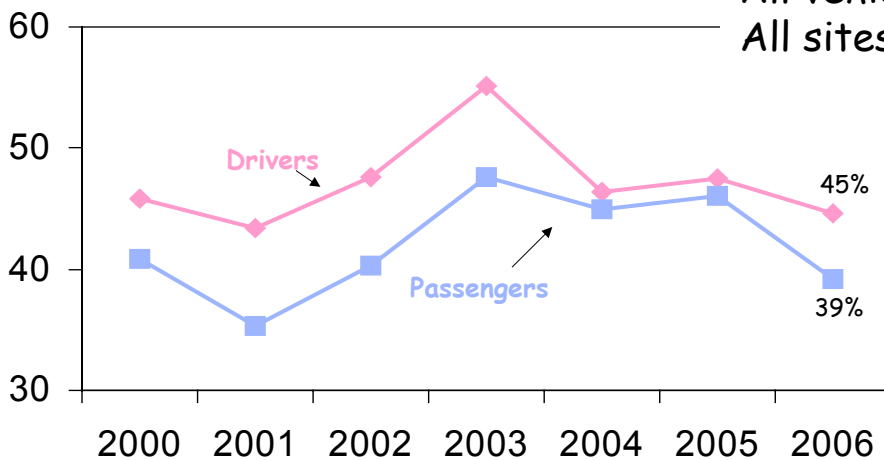
Passenger usage by age group



	<u>Helmets</u>	<u>Not Helmets</u>
	73%	27%

More than 2 in 3 of all motorcyclists wore helmets.
Great job, Hart County!!!

**All vehicles
 All sites**



This represents seat belt use over the past 7 years for both drivers and passengers. After a slight increase last year, seat belt usage has again started to decrease.