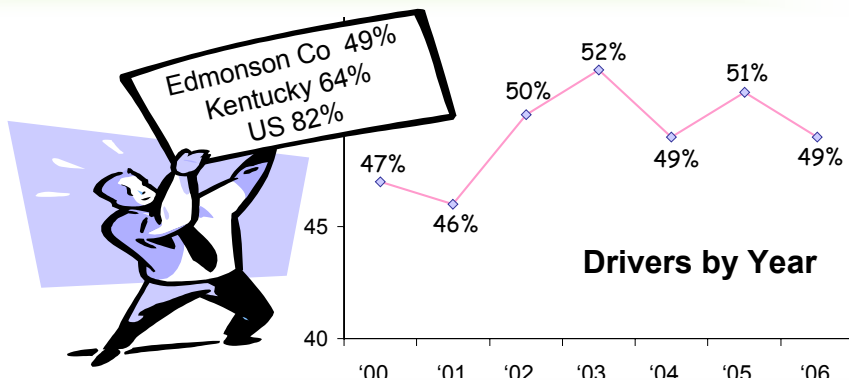
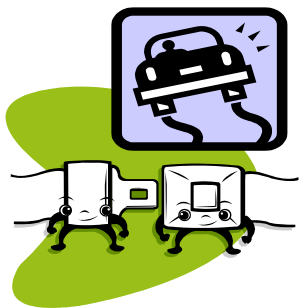


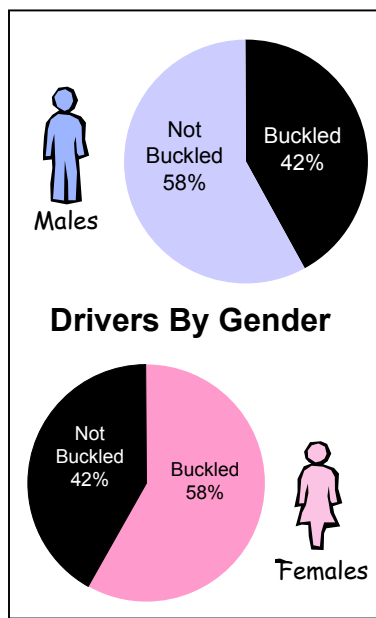
Seat Belt Usage, 2006

Edmonson County, KY

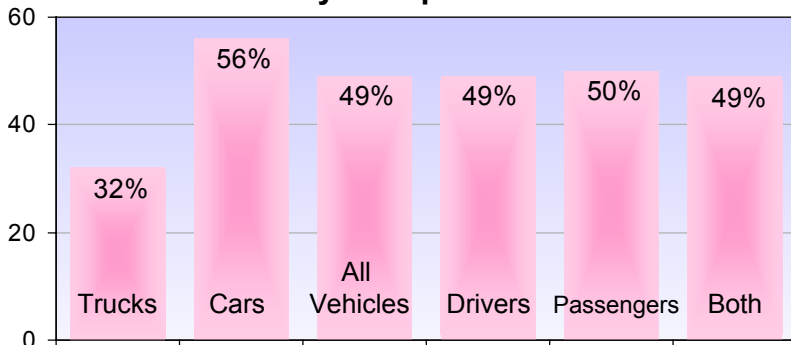
Observational surveillance was conducted on 1,204 vehicles at 8 sites in Edmonson County during the spring and summer of 2006.



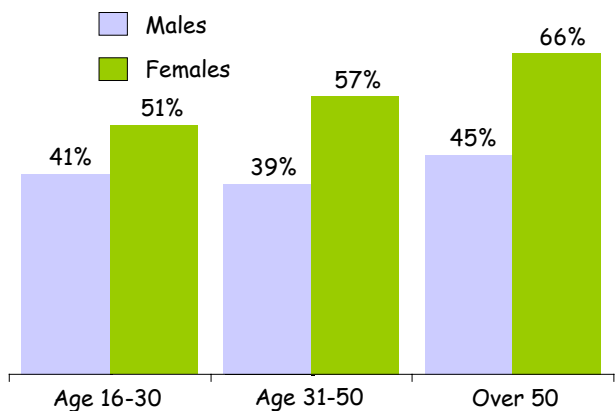
After a slight increase last year, seat belt usage has again started to fall.



Seat Belt Users by Group

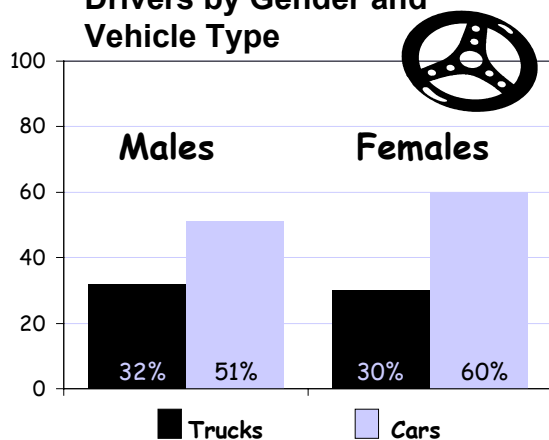


Females buckled up more often than **Males**.



The age group least likely to wear seat belts are the 16-30 year olds. This was the case with females.

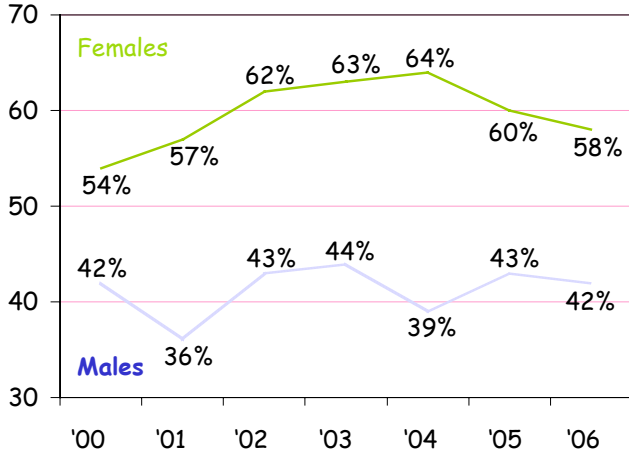
Drivers by Gender and Vehicle Type



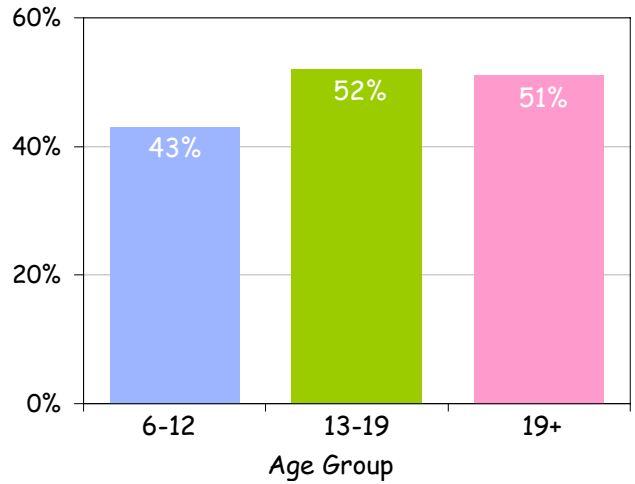
Both males and females buckled up less when driving trucks than cars.



Males have always had a much lower rates of seat belt use.



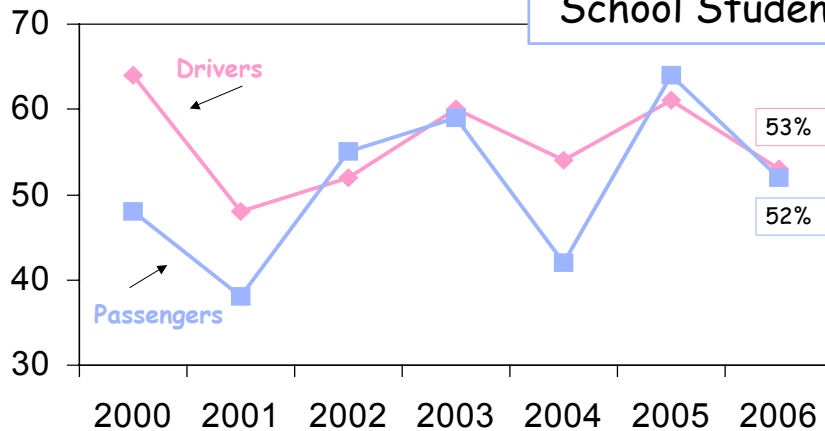
Passenger usage by age group



	<u>Helmets</u>	<u>Not Helmets</u>
	31%	69%

Only about 1 in 3 of all motorcyclists wore helmets.

Middle and High School Students



This represents seat belt use over the past 7 years at the entrance of Houchins Ferry Rd and 70 for both Edmonson County Middle and High School drivers and passengers. After a steady increase in 2004, seat belt usage is again decreasing.