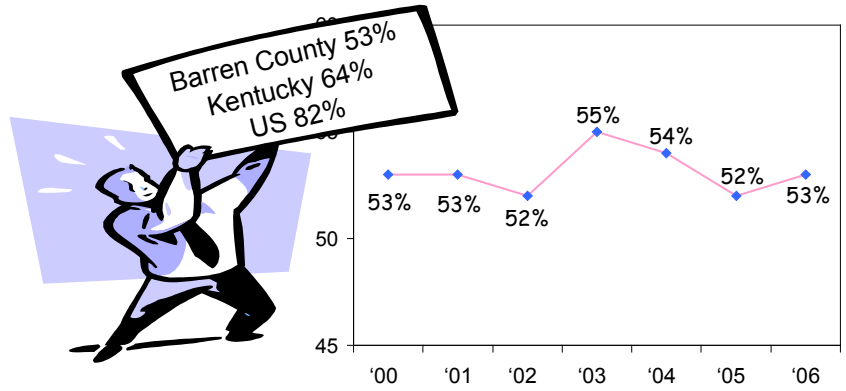
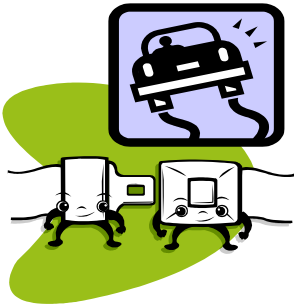


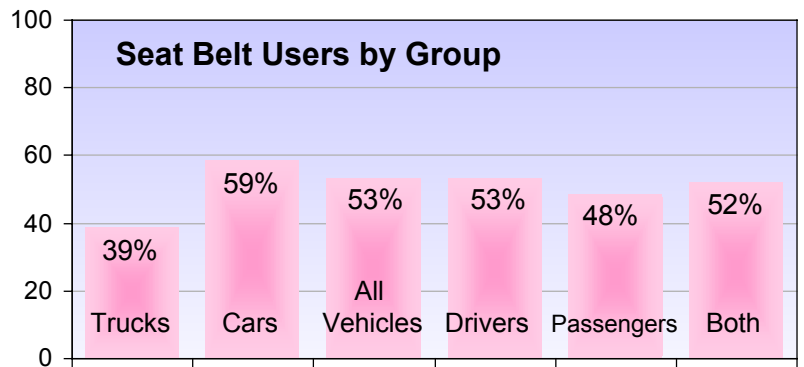
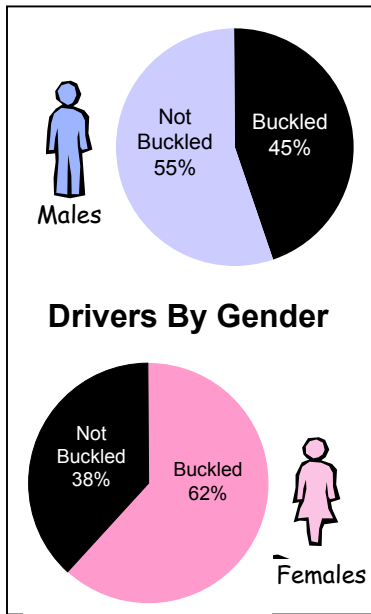
Seat Belt Usage, 2006

Barren County, KY

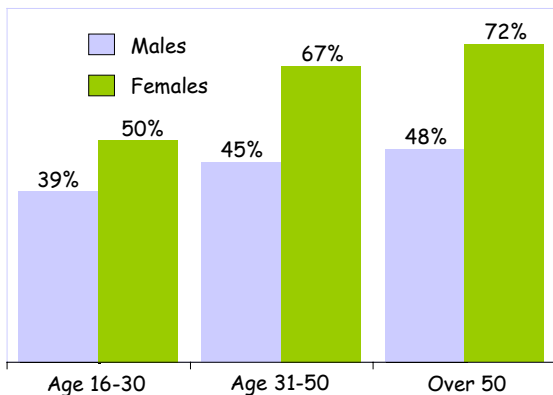
Observational surveillance was conducted on 2,648 vehicles at 10 sites in Barren County during the spring and summer of 2006.



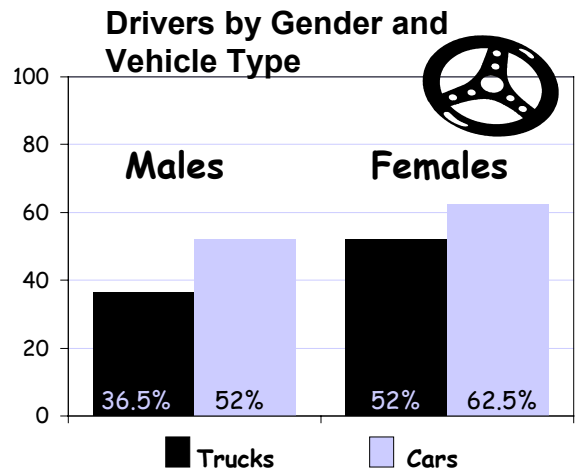
After a steady decrease, seat belt use is back on the rise.



Females buckled up more often than **Males**.



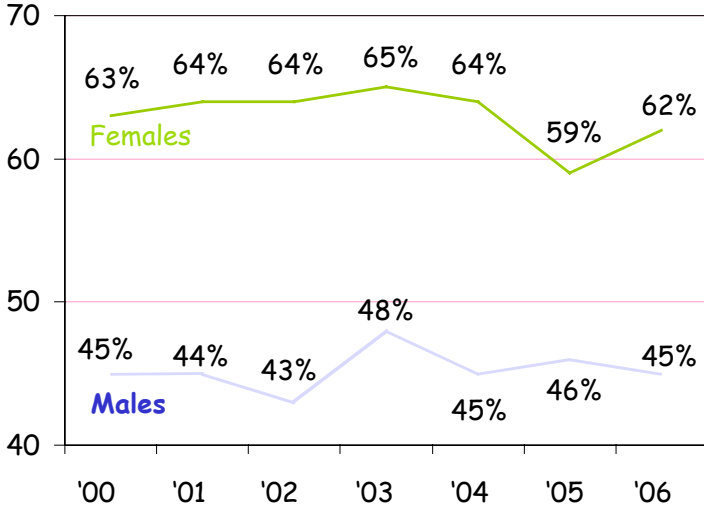
The age group least likely to wear seat belts are the 16-30 year olds.



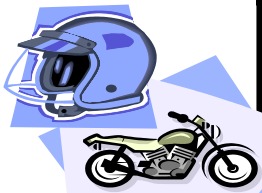
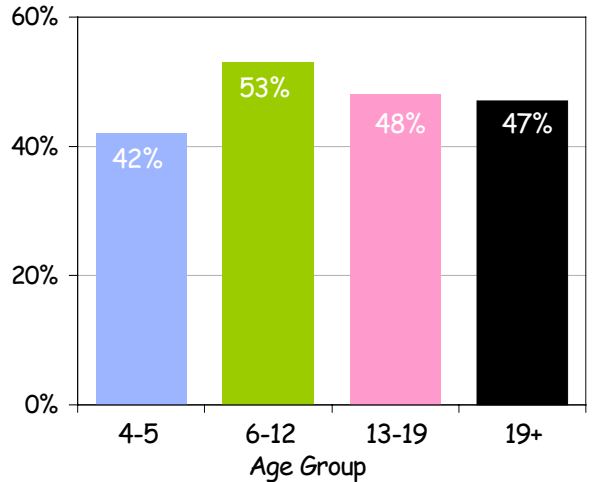
Both males and females buckled up less when driving trucks than cars.



Males have always had a much lower rates of seat belt use.



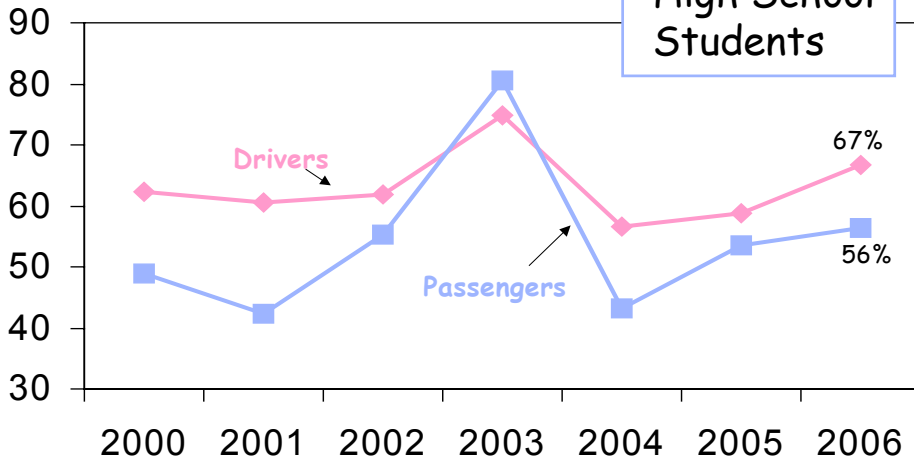
Passenger usage by age group



	<u>Helmets</u>	<u>Not Helmets</u>
	49%	51%

Fewer than half of all motorcyclists wore helmets.

High School Students



This represents seat belt use over the past 7 years at the entrance of Glasgow High School for both drivers and passengers. Usage dropped drastically for both in 2003 but has been on a steady increase since then.