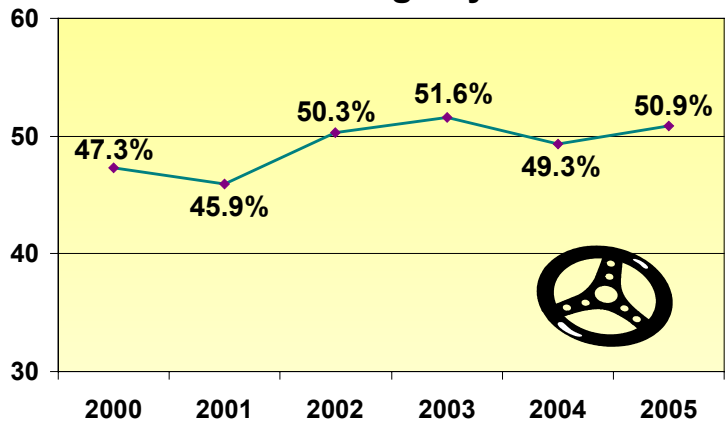
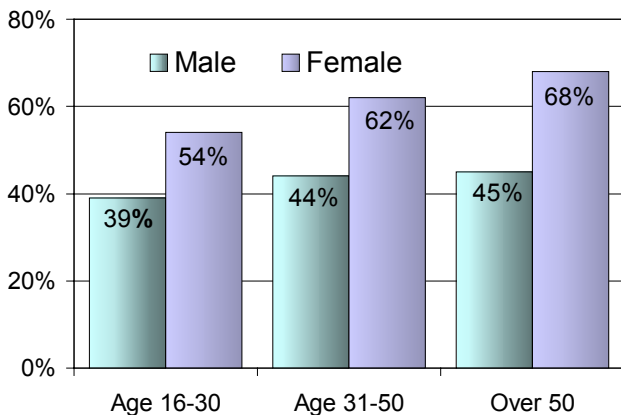




Seat Belt and Safety Seat Surveillance Study – Edmonson County 2005

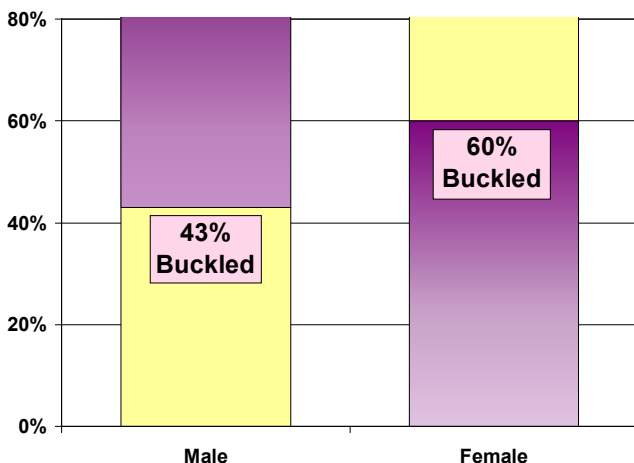
Observational surveillance was conducted on 1,216 vehicles at 8 sites in Edmonson County during the spring and summer of 2005. Commercial vehicles were not included in our observations. All ages were estimated by survey staff.

Seat Belt Usage by Drivers



Female drivers in all age groups outnumbered **males** in all age groups in seat belt use.

Overall seat belt usage **increased** 3.2% from 2004 to 2005. The breakdown of age/gender below shows specific increases.



Change in Driver Usage From 2000 to 2005, by Age and Gender

	2000	2002	2004	2005
Males 16-30	42%	43%	33%	39%
Males 31-50	50%	46%	38%	44%
Males Over 50	34%	41%	44%	45%
Females 16-30	58%	58%	64%	54%
Females 31-50	53%	63%	61%	62%
Females Over 50	45%	67%	69%	68%



Less than half of all motorcyclists wore helmets.

Motorcycle Helmet Usage		
	#	%
Used	8	42%
Not Used	11	58%
Total	19	100%

There were 1,642 occupants (drivers and front seat passengers) aged 4 and over in the 1,216 vehicles observed.

Observation Sites - Drivers and Front Seat Passengers Age 4 & Over

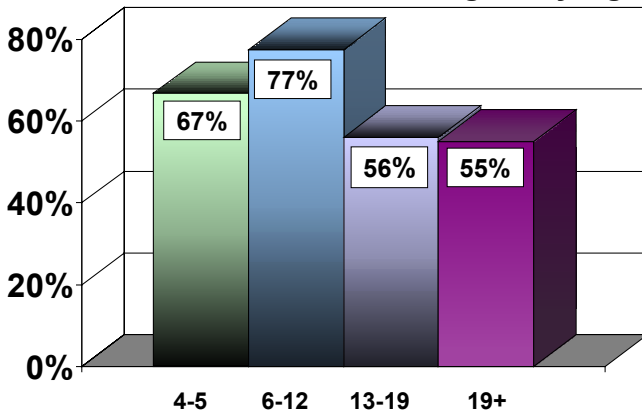
% Using Seat Belts	# Observed	Location	City vs. County	Average % Belted
49.2%	122	728 and 259	county	
51.7%	29	1827 and 1352	county	59.6% county
48.2%	197	259 and 31-W	county	
37.5%	80	Main Cross St. and Washington St.	Brownsville	
44.4%	491	259/70 and Mohawk	Brownsville	
59.8%	82	259 and 70 East	Brownsville	28.4% Brownsville
61.7%	467	Houchens Ferry Rd. & Park Rd. (High School Entrance)	Brownsville	
61.5%	174	259 and 70 East (repeat)	Brownsville	
52.5%	1,642	OVERALL TOTAL		



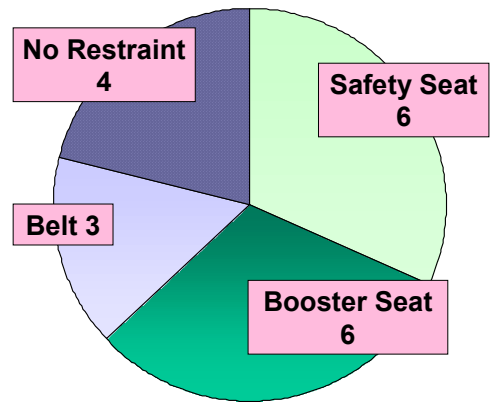
Time / Day	
34.6%	Early AM*
23.4%	Mid-day
31.7%	Saturday

* "Early AM" is before 8:00.

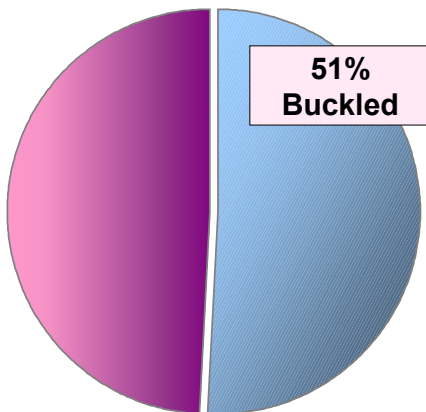
Front Seat Buckled Passengers by Age



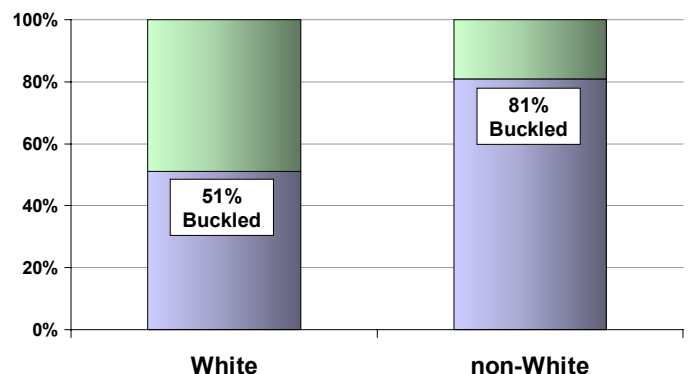
Front/Rear Passengers Ages 1-3



Over half of Barren County **drivers** observed were wearing seat belts



Race/Minority Driver Status



No infants were seen in our observations probably because newer cars have airbags on the front passenger side. Infant seats should never be used where there is an airbag present so infants are usually in the back seat where it is harder for us to observe them.

