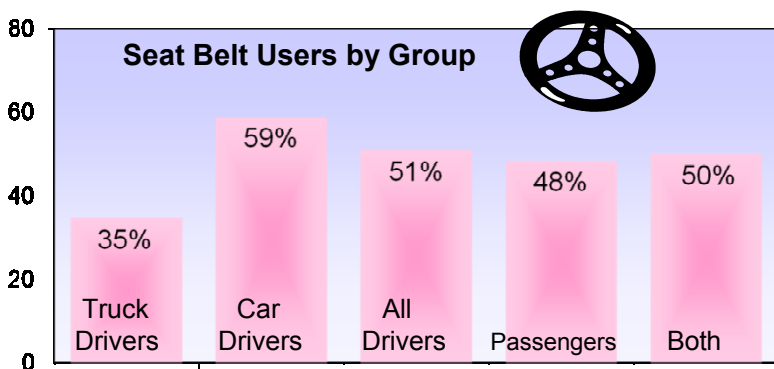
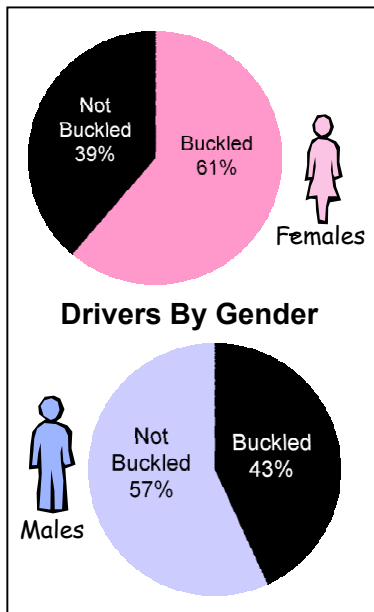
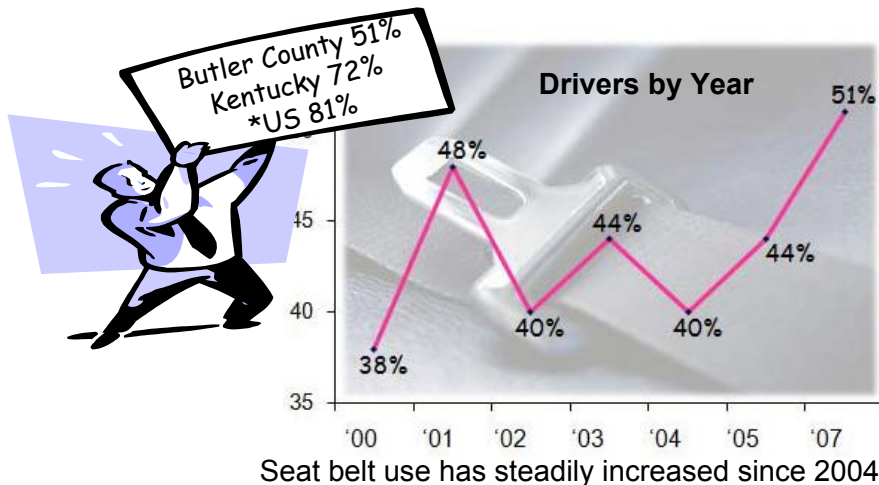
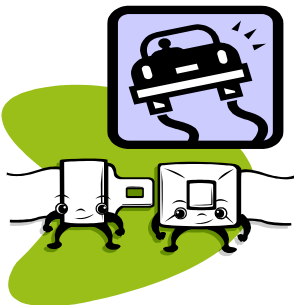


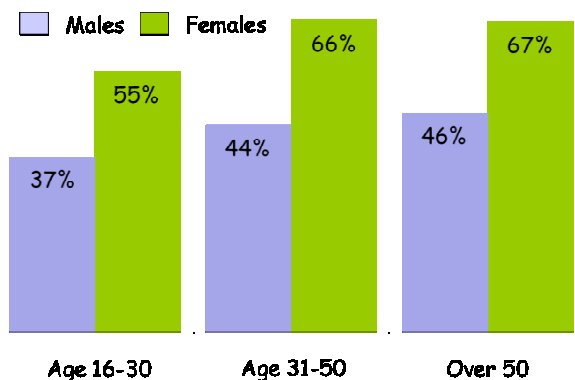
# Seat Belt Usage, 2007

## Butler County, KY

Observational surveillance was conducted on 1,139 vehicles at 6 sites in Butler County during the spring and summer of 2007.

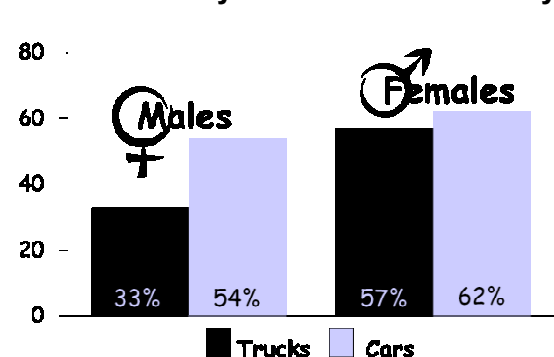


**Females** buckled up more often than **Males**



The age group least likely to wear seat belts are the 16-30 year olds, males in particular.

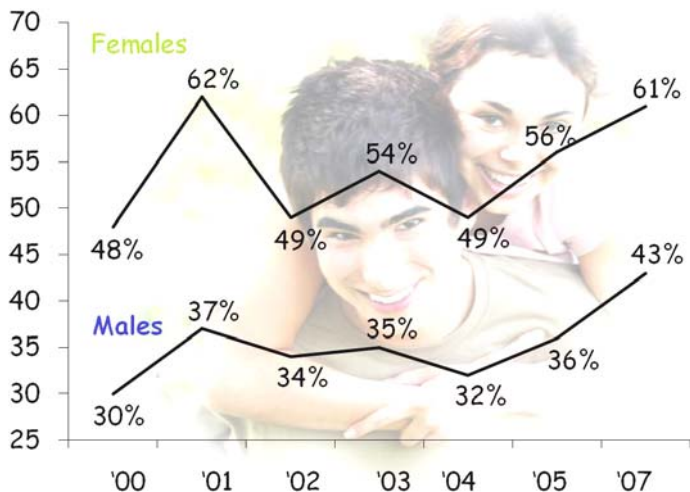
**Drivers by Gender and Vehicle Type**



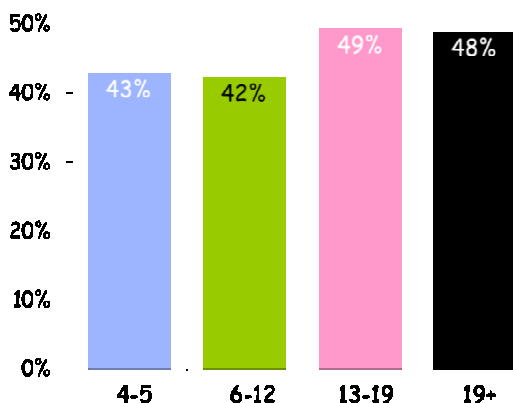
Both males and females buckled up less when driving trucks than cars. Male truck drivers remain our group with the lowest seat belt use.

\*2006 US seat belt rate

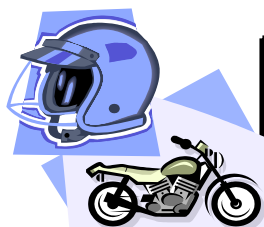
**Males have always had a much lower rate of seat belt use.**



**Passenger usage by age group**

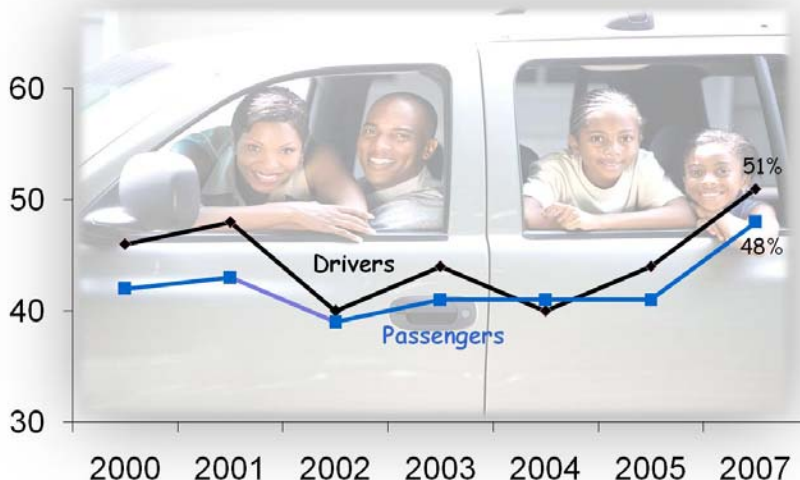


It is discouraging to see that less than half of our pre-drivers are buckling up as passengers.



	Not Helmets	Not Helmets
<u>Helmets</u>	100%	0%

There were only 4 motorcyclists observed, but all of them were wearing a helmet



This represents observed seat belt use for 7 years with both drivers and passengers. Usage has fluctuated but has been on a steady increase for both since 2004.