

Results for *Logan County* from **The Everybody Survey**



You said it. We listened. A total of 134 Logan County residents responded to *The Everybody Survey* in summer 2007. Here's what you said about the health status of our local population, about your own health, and about our community assets and challenges.

I. Logan County - Assets and Challenges

Question 5. Think about your home county for a minute. If you think about services provided by local government agencies, businesses, and organizations, which are most successful? Which are least successful?

Most Successful Services	
#1	Good Schools
#2	Low crime / safe neighborhoods
#3	Parks and recreation
#4	Garbage disposal and recycling
#5	Affordable housing

Services Needing Improvement	
#1	Good jobs and healthy economy
#2	Affordable childcare & activities for teens
#3	Safe water supply
#4	Healthcare & other Services
#5	Public health services

Question 7. Here are some ways that a community can support the physical and mental health of its residents.

Which are most successful in your home county?

Which need the most improvement?

Community Supports That Need Improvement	
#1	Jobs with health insurance
#2	Healthy behaviors and lifestyles
#3	Tolerance for Diversity
#4	Healthy Physical Environment

Most Successful Community Supports for Physical & Mental Health	
#1	Religious or spiritual values
#2	Feeling safe in your neighborhood
#3	Family support for each other
#4	Opportunities for community involvement or volunteer work

II. Health Issues Within Logan County

Question 10. Which of these are the most serious health problems in your home county?

Most serious equals those problems that have the greatest impact on overall community health.

Most Serious Health Problems		% Who Chose It
#1	Overweight / Obesity	76%
#2	Alcohol & drug addiction	65%
#3	Cancer	63%
#4	Heart attack, stroke, high blood pressure	55%
#5	Teen pregnancy	41%

We Should Improve These Problem Health Behaviors		% Who Chose It
#1	Alcohol or drug abuse	64%
#2	Tobacco use	51%
#3	Not enough physical activity	43%
#4	Teen sexual activity	43%

Question 11. These health behaviors are related to some common health problems. Those health problems can lead to early death, disability, family suffering, cost for care, and the overall economy. Which should we work to improve in your home county?

Question 12. Here are some factors related to injury. Which are the most serious safety problems for people in your home county?

Most Serious Injury Risk Behaviors		% Who Chose It
#1	Unsafe driving (speed, distractions)	72%
#1	Drunk and drugged driving	72%
#2	Drug related violence	53%
#3	Domestic violence	40%
#4	Unsafe roads (traffic, hills, curves)	39%
#5	Hazards in the home (falls, fires, etc.)	22%

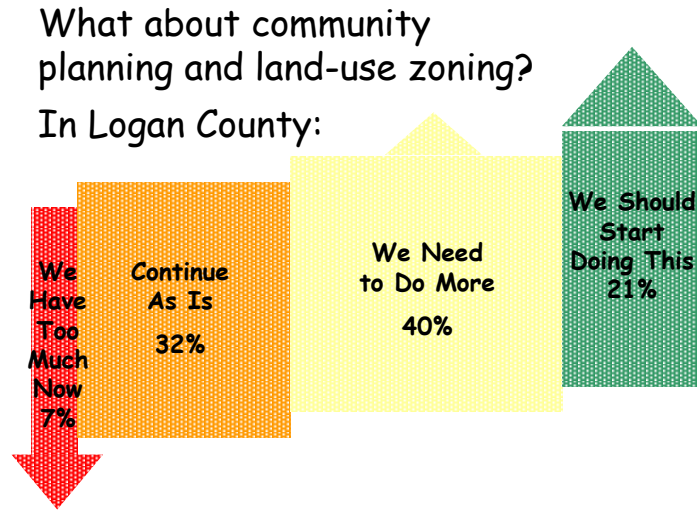
I Worry About These Environmental Health Risks		% Who Chose It
#1	Diseases from mosquitoes and ticks	76%
#2	Molds	57%
#3	Food poisoning illness (at home, in restaurants, from ready-to-eat groceries)	51%
#4	Groundwater pollution from failing septic systems	46%
#5	Water pollution from storm water runoff	33%

Question 13. Do any of these environmental health issues concern or worry you?

Question 14. Which of these environmental health behaviors should we work to improve in your home county?

We Should Improve These Environmental Behaviors		% Who Chose It
#1	Illegal dumping of garbage	69%
#2	Second-hand smoke	63%
#3	Unsafe food handling practices	62%
#4	Industries polluting the water	57%
#5	Overuse of pesticides & fertilizers	44%

Question 15. Community Planning and Land-use Zoning.



III. Physical Activity Facilities in Logan County

Question 33. Does your home county have enough of these physical activity opportunities available?

We Need These Physical Activity Opportunities...		% Who Said It
#1	Walking or hiking trails	69%
#2	Sidewalks	63%
#3	Bicycle paths	57%
#4	Community swimming pools	50%
#5	Parks	47%
#6	Sports fields and courts	44%
#7	Health/fitness clubs	42%
#8	Places for yoga, tai-chi, etc.	41%

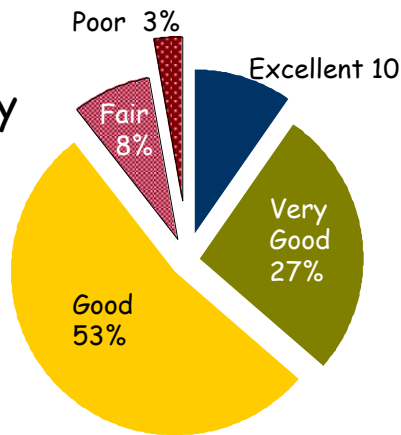
IV. Your Personal Health Status - Logan County

Question 17.

Would you say that in general your health is:

- Excellent
- Very Good
- Good
- Fair
- Poor

Only 11% of Logan County respondents described themselves as being in 'fair or 'poor' health.



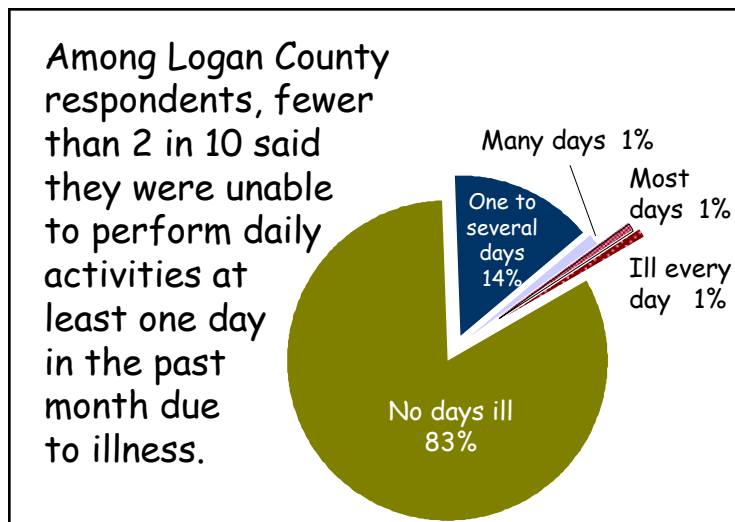
Fair or Poor

U.S. average = 15%
 Kentucky = 23%
 BRFSS survey, 2006

I've Been Told That I Have...	% Who Said It
#1 High blood pressure	39%
#2 Overweight / Obesity	34%
#3 Hearing/Vision loss	23%
#4 Arthritis	22%
#5 Risk factors for stroke or heart attack	15%
#6 Diabetes	6%
#7 Lung disease / Asthma	5%
<i>None of These (a total of 11 diseases listed)</i>	<i>31%</i>

Question 18. Have you ever been told by a doctor, nurse, or other health professional that you had any of the following chronic illnesses?

Question 19. How many days in the past month were you not able to work or do your daily activities because of illness?



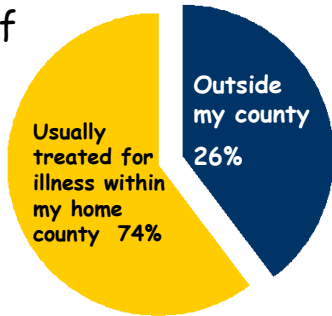
V. Health Care Services in Our Communities

Question 20. When you are sick, where do you usually go for treatment?

Question 32. When your children are sick, where do you usually take them?

My Family's Usual Health Care Providers		
Me		My children
#1	A doctor's office	#1
#2	Urgent care center	#2
#3	Hospital emergency room	#3
#4	I never go to the doctor	
	Community health center	#5
#5	No usual place	#4
#6	Free clinic	#6

For more than one-quarter of us, our usual health care provider is outside of our home county.



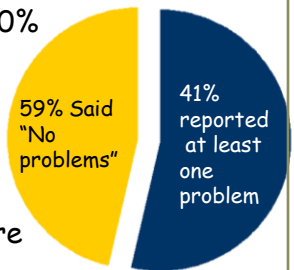
Question 21. Is your usual health care provider outside of your home county?

Why I go outside my home county for health care services

Question 22. I go outside my home county for health care because...

- #1 **My doctor of choice is outside my county**
- #2 Hospital of choice is outside my county
- Takes too long to get an appointment with local doctors
- #5
- #3 Other
- #4 I need someone who is open later in the day or evening

Almost 60% of us have no problems with our regular healthcare services.



Problems with my regular healthcare services

Question 23. Are any of these a problem with your regular health care services?

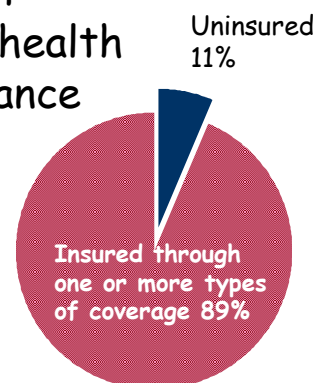
- #1 **I cannot get an appointment quickly enough**
- #2 I cannot afford the medicines
- #3 I cannot afford the doctor's fees
- #4 I cannot come when they are open
- #5 They do not explain things well enough

VI. Health Insurance Coverage

Question 24: Do you have health insurance?

I have health insurance through...	
72%	My employer
15%	Medicare
5%	Medicare Supplemental Insurance
2%	I buy my own
7%	Other

11% of us do not have health insurance



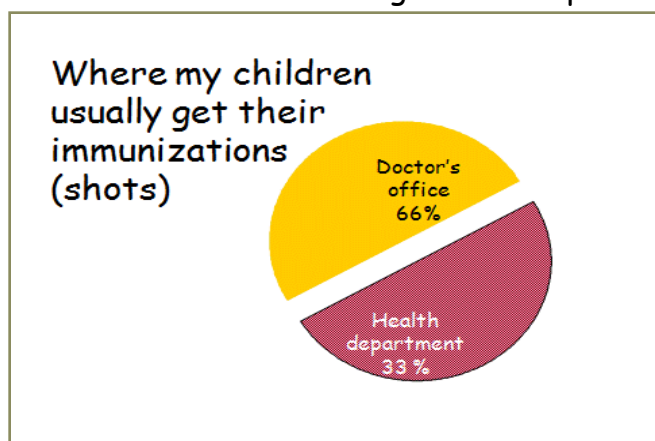
My health insurance covers these types of care

97%	Doctor's office treatment
96%	Hospital care
87%	Prescription medicines
76%	Preventive care (annual physical, cancer screenings, blood sugar, cholesterol, etc.)
66%	Mental health services
60%	Immunizations (baby shots, flu shots, adult shots, etc.)
58%	Rehab services (physical, occupational, or speech therapy, etc.)
50%	Chiropractic services
41%	Drug/alcohol treatment

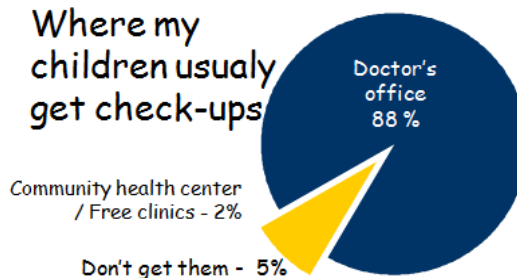
Question 25: If you have health insurance, what type of care does it cover?

VII. Children's Preventive Services

Question 33. Where do your children usually get check-ups?



Where my children usually get check-ups



Question 34. Where do your children usually get their immunizations?

VIII. Going Elsewhere for HealthCare Services

Question 27: Within the past year, did you have any of these services outside your home county?

In the past year, I had these services outside my county		% Who Said It
#1	Lab Work	63%
	Radiology (X-ray, ultrasound, mammography, MRI, etc.)	51%
#2	None outside my home county	20%
#3	General surgery	15%
#4	Hospital stay	13%
#5	Emergency room services	11%
#6	Other services	9%
#7	Counseling services	7%

Question 28. Within the past year, did you see any of these medical specialties outside your home county?

In the past year, I saw these medical specialties outside my home county		% Who Said It
#1	Gynecology (female care)	37%
#2	None of these outside my home county	25%
#3	Eye care	19%
#4	Dental care	17%
#5	Ear, nose, and throat care	12%
#6	Other (see list)	11%
#7	Cardiac/Heart care	10%
#8	Dermatology	10%
#9	Orthopedic/ bone care	9%
#10	Urology care	9%
#11	Dental specialist	7%
#12	Allergist	7%
	Foot care, Psychiatry care, Rehabilitation (in-patient), rehabilitation (out-patient), pregnancy & birth, hearing services	Less than 6%

Question 37. Does your home county have enough of these health services available?

Logan County <i>needs more</i> of these health services.		
More than two-thirds of respondents said	77%	Urgent treatment clinics
	73%	After-hours sick care
	63%	'Sick child' day care
One half to two thirds of respondents said this.	54%	Weight loss programs or services
	50%	School health education
	48%	Group health education or support groups
	46%	School nurses
	42%	Nursing home beds
	42%	Respite care for home-bound caregivers
	39%	Home health care
One third to one-half of respondents said this.	37%	Prenatal care
	37%	Health Department clinic services
	35%	Adult day care
	32%	Outpatient rehabilitation
	30%	Ambulance services / paramedics service
Less than one third of respondents said this.	29%	X-ray & Ultrasound
	28%	Personal education on using my medications
	25%	Medical equipment
	16%	Hospital beds
	11%	Chiropractic care

IX. Mental Health Services

My Household Has Been Unable to Get Needed Mental Health Services within the past year

None needed	83%
Needed services, and <u>were able</u> to get them	11%
Hospitalization	4%
Counseling / therapy	2%
Crisis care	< 1%
Other services	1%

Question 35. Within the past year, did you or anyone in your household need any of these mental health services, but were unable to get them?