

# Results for *Butler County* from **The Everybody Survey**



You said it. We listened. A total of 87 Butler County residents responded to *The Everybody Survey* in summer 2007. Here's what you said about the health status of our local population, about your own health, and about our community assets and challenges.

## I. Butler County - Assets and Challenges

**Question 5.** Think about your home county for a minute. If you think about services provided by local government agencies, businesses, and organizations, which are most successful? Which are least successful?

Most Successful Services		Services Needing Improvement	
#1	Good Schools	#1	Good jobs and healthy economy
#2	Safe water supply	#2	Affordable childcare & activities for teens
#3	Good roads and traffic flow	#3	Healthcare & other Services
#4	Public health services	#4	Child Abuse and Neglect
#5	Low crime / safe neighborhoods	#5	Crime/safe neighborhoods
		(tie)	Arts and cultural events

**Question 7.** Here are some ways that a community can support the physical and mental health of its residents.

Which are most successful in your home county?

Which need the most improvement?

Community Supports That Need Improvement			Most Successful Community Supports for Physical & Mental Health	
#1	Jobs with health insurance	88%	#1	Religious or spiritual values
#2	Tolerance for Diversity	34%	#2	Feeling safe in your neighborhood
#3	Healthy behaviors and lifestyles	27%	#3	Family support for each other
#4	Healthy Physical Environment	12%	#4	Opportunities for community involvement or volunteer work

## II. Health Issues Within Butler County

**Question 10.** Which of these are the most serious health problems in your home county?

*Most serious equals those problems that have the greatest impact on overall community health.*

Most Serious Health Problems		% Who Chose It
#1	Alcohol & drug addiction	79%
#2	Cancer	74%
#3	Overweight / Obesity	68%
#4	Heart attack, stroke, high blood pressure	59%
#5	Breathing problems (asthma, COPD, etc.)	45%

We Should Improve These Problem Health Behaviors		% Who Chose It
#1	Alcohol or drug abuse	74%
#2	Not enough physical activity	48%
#3	Tobacco use	46%
#4	Teen sexual activity	39%

**Question 11.** These health behaviors are related to some common health problems. Those health problems can lead to early death, disability, family suffering, cost for care, and the overall economy. Which should we work to improve in your home county?

**Question 12.** Here are some factors related to injury. Which are the most serious safety problems for people in your home county?

Most Serious Injury Risk Behaviors		% Who Chose It
#1	Drunk and drugged driving	87%
#2	Unsafe driving (speed, distractions)	75%
#3	Drug related violence	68%
#4	Domestic violence	46%
#5	Unsafe roads (traffic, hills, curves)	34%

I Worry About These Environmental Health Risks		% Who Chose It
#1	Diseases from mosquitoes and ticks	86%
#2	Molds	55%
#3	Food poisoning illness (at home, in restaurants, from ready-to-eat groceries)	50%
#4	Groundwater pollution from failing septic systems	36%
#5	Rabies (wild animals or pets)	33%

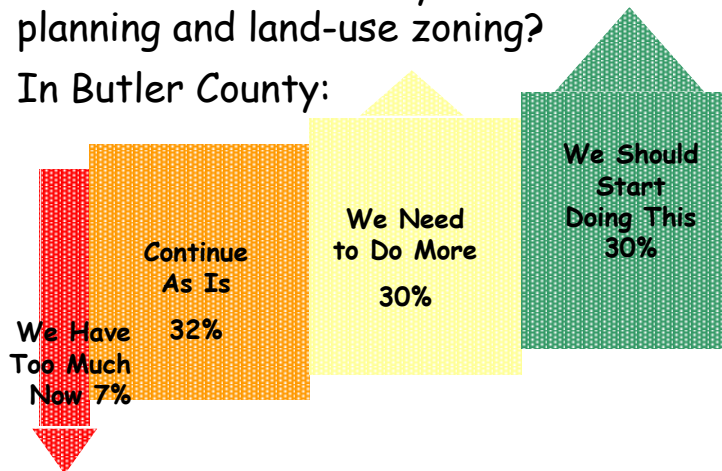
**Question 13.** Do any of these environmental health issues concern or worry you?

**Question 14.** Which of these environmental health behaviors should we work to improve in your home county?

We Should Improve These Environmental Behaviors		% Who Chose It
#1	<b>Second-hand smoke</b>	<b>70%</b>
#2	Illegal dumping of garbage	68%
#3	Unsafe food handling practices	60%
#4	Industries polluting the air	48%
#5	Industries polluting the water	33%

**Question 15.** Community Planning and Land-use Zoning.

What about community planning and land-use zoning? In Butler County:



### III. Butler County Physical Activity Facilities

**Question 33.** Does your home county have enough of these physical activity opportunities available?

We Need These Physical Activity Opportunities...		% Who Said It
#1	<b>Walking or hiking trails</b>	<b>64%</b>
#2	Sidewalks	62%
#3	Health/fitness clubs	56%
#4	Bicycle paths	47%
#5	Sports leagues (adults)	43%
#6	Parks	41%
#7	Sports fields and courts	38%
#8	Community swimming pools	38%

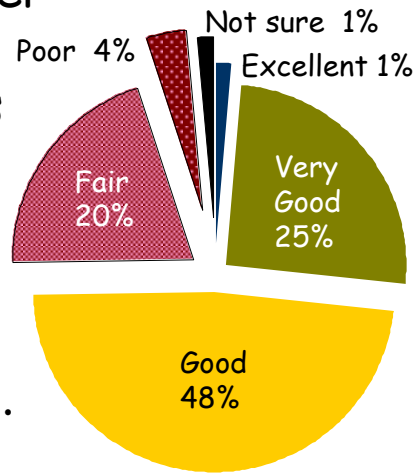
## IV. Your Personal Health Status - Butler County

**Question 17.**

Would you say that in general your health is:

- Excellent
- Very Good
- Good
- Fair
- Poor

34% of Butler County respondents described themselves as being in 'fair or 'poor' health.



Fair or Poor

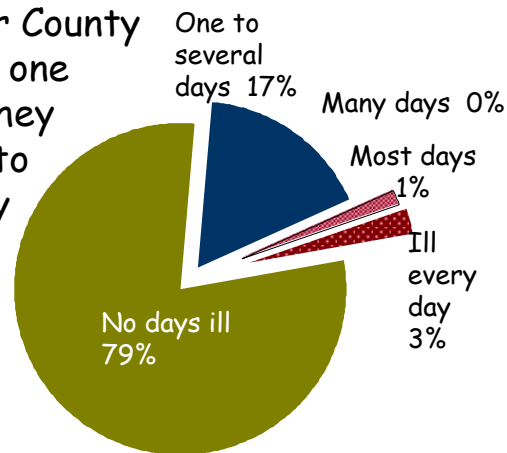
U.S. average = 15%  
 Kentucky = 23%  
 BRFSS survey, 2006

I've Been Told That I Have...	% Who Said It
<b>#1 Overweight / Obesity</b>	<b>35%</b>
<b>#1 Arthritis</b>	<b>(tie)</b>
#2 High blood pressure	26%
#2 Hearing / Vision Loss	(tie)
#3 Risk factors for stroke or heart attack	22%
#4 Diabetes	17%
<i>None of These (a total of 11 diseases listed)</i>	<i>25%</i>

**Question 18.** Have you ever been told by a doctor, nurse, or other health professional that you had any of the following chronic illnesses?

**Question 19.** How many days in the past month were you not able to work or do your daily activities because of illness?

Among Butler County respondents, one in five said they were unable to perform daily activities in the past month due to illness.



## V. Health Care Services in Our Communities

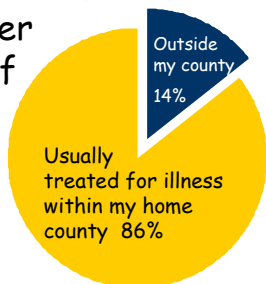
**Question 20.** When you are sick, where do you usually go for treatment?

**Question 32.** When your children are sick, where do you usually take them?

### My Family's Usual Health Care Providers

Me	My children
#1 A doctor's office	#1
#2 Urgent care center	#3
#3 Hospital emergency room	#2
#4 I never go to the doctor	
#5 Community health center	
Free Clinic	#4

For more than one-quarter of us, our usual health care provider is outside of our home county.



**Question 21.** Is your usual health care provider outside of your home county?

### Why I go outside my home county for health care services

**Question 22.** I go outside my home county for health care because...

- #1 My doctor of choice is outside my county
- #2 Hospital of choice is outside my county
- #3 Takes too long to get an appointment with local doctors
- #4 I need someone who is open later in the day or evening
- #5 Other (see list)

#### "Other", Examples

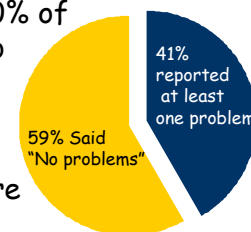
- No hospital in Butler County.
- Appointments are meaningless here.
- Local office not taking new patients.

### Problems with my regular health care services

**Question 23.** Are any of these a problem with your regular health care services?

- #1 I cannot get an appointment quickly enough
- #2 I cannot afford the medicines
- #3 I cannot afford the doctor's fees
- #4 They do not explain things well enough
- #5 I cannot come when they are open

Almost 60% of us have no problems with our regular health care services.



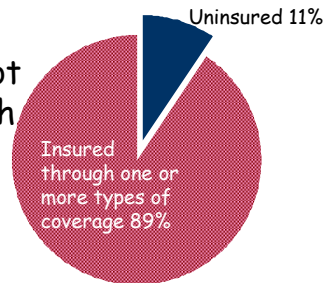
## VI. Health Insurance Coverage

**Question 24:**  
Do you have health insurance?

### I have health insurance through...

- 63%** My employer
- 13% Medicare
- 10% I buy my own
- 9% Medicaid
- 5% Other (see list)

11 percent of us do not have health insurance.



### My health insurance covers these types of care

- 99% Doctor's office treatment
- 96% Hospital care
- 90% Prescription medicines
- 73% Preventive care (annual physical, cancer screenings, blood sugar, cholesterol, etc.)
- 65% Immunizations (baby shots, flu shots, adult shots, etc.)
- 52% Mental health services
- 44% Rehab services (physical, occupational, or speech therapy, etc.)
- 36% Chiropractic services
- 30% Drug/alcohol treatment
- 16% Nutrition counseling or weight loss program

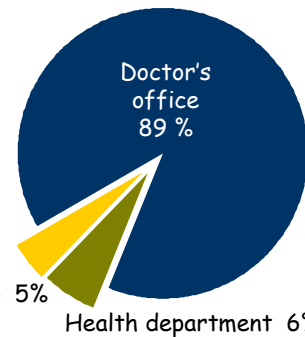
**Question 25:** If you have health insurance, what type of care does it cover?

## VII. Children's Preventive Services

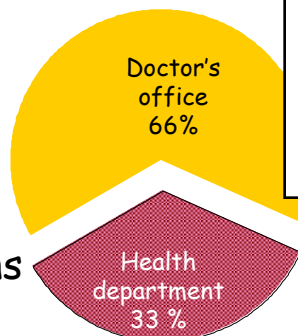
**Question 33.** Where do your children usually get check-ups?

Where my children usually get check-ups

Don't get them - 5%



Where my children usually get their immunizations (shots)



**Question 34.** Where do your children usually get their immunizations?

## VIII. Going Elsewhere for Health Care Services

**Question 27:** Within the past year, did you have any of these services outside your home county?

In the past year, I had these services outside my county		% Who Said It
<b>#1</b>	<b>Lab work</b>	<b>79%</b>
#2	Radiology (X-ray, ultrasound, mammography, MRI, etc.)	60%
#3	General surgery	22%
#4	Emergency room services	21%
#5	Hospital stay	18%
#6	None outside my home county	15%
#7	Counseling services	3%
#8	Other services	1%

**Question 28.** Within the past year, did you see any of these medical specialties outside your home county?

In the past year, I saw these medical specialties outside my home county		% Who Said It
<b>#1</b>	<b>Gynecology (female care)</b>	<b>48%</b>
#2	Dental care	32%
#3	Cardiac/Heart care	19%
#4	None of these outside my home county	16%
#5	Eye care	16%
#6	Ear, nose, and throat care	16%
#7	Orthopedic/Bone care	15%
#8	Dermatology	14%
#9	Allergist (allergies)	12%
#10	Pregnancy & birth	11%
	Urology care, Foot care, Psychiatry care, Rehabilitation (in-patient), rehabilitation (out-patient), hearing services, Dental specialist	less than 7%

Question 37. Does your home county have enough of these health services available?

Butler County <i>needs more</i> of these health services.		
More than one half of respondents said this.	91%	Urgent treatment clinics
	88%	After-hours sick care
	77%	X-ray & Ultrasound
	77%	Hospital beds
	70%	'Sick child' day care
	63%	Outpatient rehabilitation
	62%	Prenatal care
	62%	Weight loss programs or services
	60%	School nurses
	60%	School health education
	50%	Group education or support groups
50%	Nursing home beds	
One third to one half of respondents said this.	46%	Personal education on using my medications correctly
	45%	Health Department clinic services
	41%	Medical equipment services
	35%	Respite care for home-bound caregivers
One quarter to one-third of respondents said	31%	Home health care
	28%	Adult day care
	27%	Ambulance services / paramedics
Less than one quarter said this.	24%	Chiropractic care

## IX. Mental Health Services

My Household Has Been Unable to Get Needed Mental Health Services within the past year	
None needed	90%
Needed services, and <u>were able</u> to get them	9%
Counseling / therapy	3%
Crisis Care	2%

Question 35. Within the past year, did you or anyone in your household need any of these mental health services, but were unable to get them?

Question 36. If you could not get needed mental health services, please describe/ explain.

No explanationas given by Butler County residents.